



MODEL FDD-A-SL DYNAMIC CURTAIN SLIMLINE FIRE DAMPERS DYNAMIC CLOSURE MODELS — 1¹/₂ & 3 HOUR

Standard Construction:

- Frame:** Roll Formed Galvanized Steel with Safety Edge.
- Blades:** Roll Formed Galvanized Steel, Curtain-Type
- Springs:** Stainless Steel.
- Fusible Link:** U.L. Listed 165°F, and 212°F available

1-1/2 & 3 Hr. Vertical:

- Min. Size:** 6" w X 6" h (152mm x 152mm)
- Max. Single Sect.:** 36" w X 36" h (914mm x 914mm)
- Max. Size:** 72" w X 36" h (165°F Only)
(1829mm x 914mm)

1-1/2 & 3 Hr. Horizontal:

- Min. Size:** 6" w X 6" h (152mm x 152mm)
- Max. Single Sect.:** 24" w X 24" h (610mm x 610mm)
- Max. Size:** 36" w X 36" h
(914mm x 914mm)
- Maximum Velocity:** 2000 fpm (10.2 m/s)
- Maximum Pressure:** 4" wg (1kPa)

Optional Construction:

- Factory Supplied Sleeve
18 - 16 - 14 - 10 Gauge
Sleeve Length (Required)
- 3 Hour Rating

Notes: Non-sleeved Dampers are furnished approximately 1/4" (6.4mm) smaller than given duct dimensions. Sleeved Dampers are furnished approximately same size as given duct dimensions, unless otherwise noted.

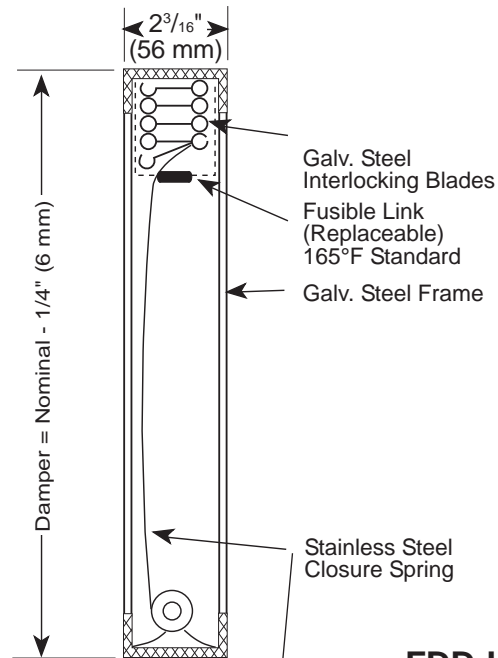
DESIGNED AND TESTED IN ACCORDANCE WITH UL-555 AND ULC-S112. MEETS ALL NFPA-90A REQUIREMENTS FOR FIRE DAMPERS.



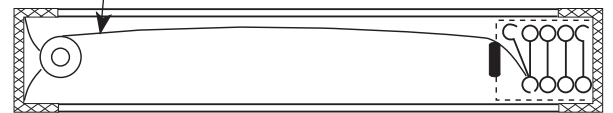
LISTED AND LABELLED BY:



FDD-VA-SL



FDD-HA-SL



Manufacturer's Recommendations

All moving parts of the damper must be inspected and cycled at intervals not greater than 6-12 months the first year and then every 4 years after, or in accordance with the latest edition of NFPA 90A, 92A, local codes and the actuator manufacturer. In addition, fuse links shall be removed and inspected for corrosion. Dry lubricants are recommended.

Specifications are correct at time of printing. However, as part of our 'continuous improvement program,' we reserve the right to make further improvements without notice. © 2007 NCA Manufacturing

FDD-A-SL - 09 - 06

Project:	Contractor:
Location:	Address:
Architect:	P.O. Number:
Engineer:	Date: